

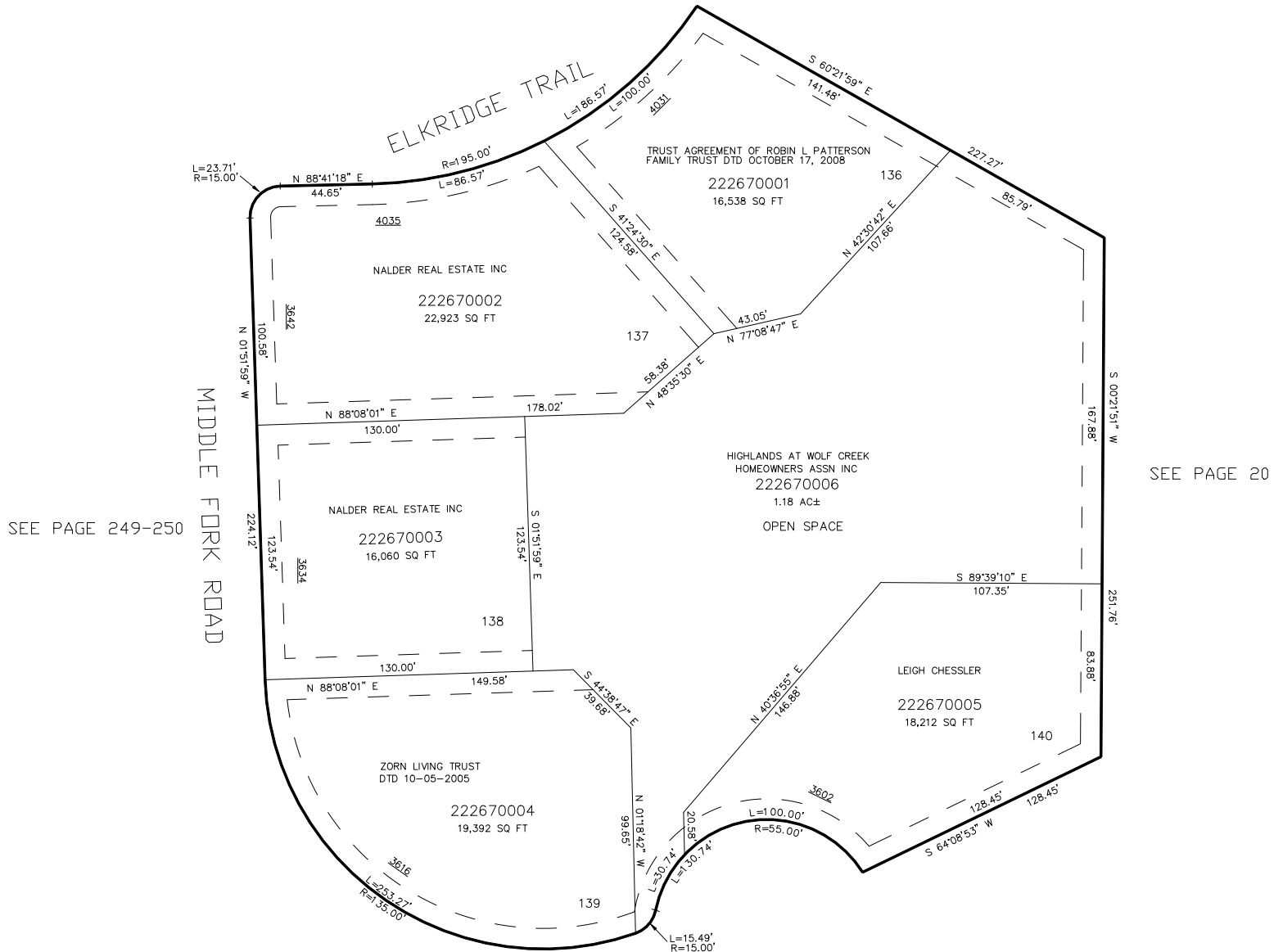
PART OF THE SW.1/4, OF SECTION 23, T.7N., R.1E., S.L.B. & M.
THE HIGHLANDS AT WOLF CREEK PHASE 9

IN WEBER COUNTY

TAXING UNIT: 203

SCALE 1" = 40'

SEE PAGE 247



SEE PAGE 20

SEE PAGE 249

FOR COMPLETE ENG DATA SEE
ORIGINAL DEDICATION PLAT IN
BOOK 65, PAGE 37 OF RECORDS.

10' UTILITY & DRAINAGE EASEMENTS EACH
SIDE OF PROPERTY LINES AS INDICATED
BY DASHED LINES EXCEPT AS OTHERWISE
SHOWN.